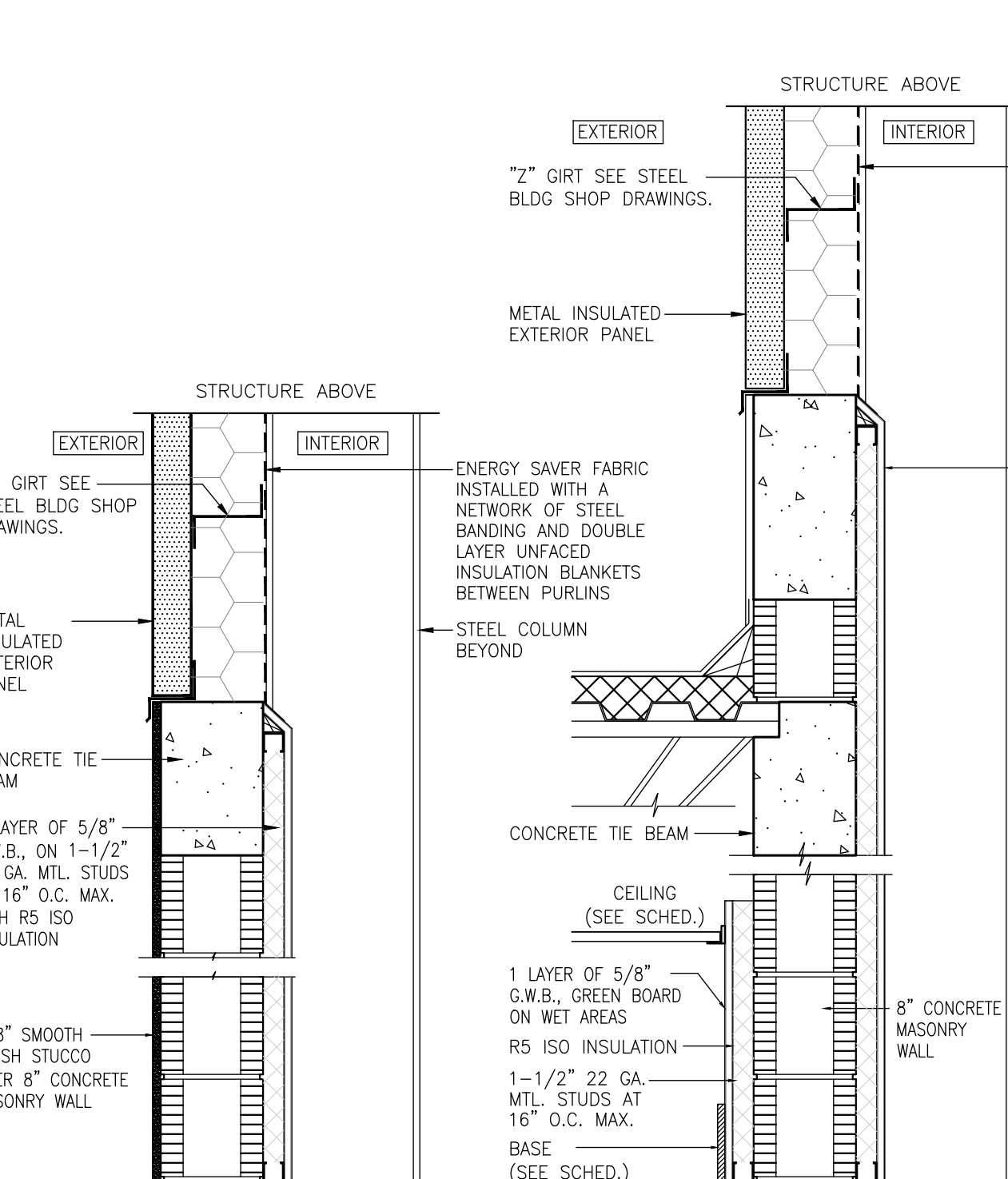


WINDOW & STOREFRONT SCHEDULE									
MK	TYPE	FRAME	WIDTH	HEIGHT	SILL	DETAILS	REMARKS	WIND PRESSURE	
1A	FIXED	ALUM	6'-0" (2 DIVISIONS)	6'-0"	2'-0"		SPANDREL WALL PANEL BEHIND WINDOW SEE DETAIL 1A/A&G (SIM.)		
1B	FIXED	ALUM	6'-0" (2 DIVISIONS)	6'-0"	2'-0"				
1C	FIXED	ALUM	6'-0" (2 DIVISIONS)	6'-0"	2'-0"				
1D	FIXED	ALUM	8'-0" (2 DIVISIONS)	4'-0"	8'-0"				
1E	FIXED	ALUM	12'-0" (2 DIVISIONS)	4'-0"	8'-0"				
1F	FIXED	ALUM	14'-0" (2 DIVISIONS)	12'-0"	0'-0"				SEE STRUCTURAL FOR PRESSURE
1G	FIXED	ALUM	14'-0" (2 DIVISIONS)	12'-0"	0'-0"				
1H	FIXED	ALUM	12'-0" (2 DIVISIONS)	4'-0"	8'-0"				
1J	FIXED	ALUM	8'-0" (2 DIVISIONS)	4'-0"	8'-0"				
1K	FIXED	ALUM	6'-0" (2 DIVISIONS)	6'-0"	2'-0"		SPANDREL WALL PANEL BEHIND WINDOW SEE DETAIL 1A/A&G (SIM.)		
1L	FIXED	ALUM	6'-0" (2 DIVISIONS)	6'-0"	2'-0"				
1M	FIXED	WOOD LOUVERS	8'-0"	4'-0"	2'-0"		INTERIOR LOUVER		
1N	FIXED	WOOD LOUVERS	8'-0"	4'-0"	2'-0"		INTERIOR LOUVER		
2A	FIXED	ALUM	24'-0" (4 DIVISIONS)	3'-6"	20'-6"		SPANDREL WALL PANEL BEHIND WINDOW SEE DETAIL 1A/A&G		SEE STRUCTURAL FOR PRESSURE
2B	FIXED	ALUM	24'-0" (4 DIVISIONS)	3'-6"	20'-6"				
2C	FIXED	ALUM	24'-0" (4 DIVISIONS)	3'-6"	20'-6"				
2D	FIXED	ALUM	24'-0" (4 DIVISIONS)	3'-6"	20'-6"				
2E	FIXED	ALUM	24'-0" (4 DIVISIONS)	3'-6"	20'-6"				
2F	FIXED	ALUM	24'-0" (4 DIVISIONS)	3'-6"	20'-6"				
2G	FIXED	ALUM	24'-0" (4 DIVISIONS)	3'-6"	20'-6"				
SF-1	FIXED	ALUM	14'-0" (SEE DETAIL FOR DIVISIONS) (ON DOORS)	12'-0"	0'-0"				
SF-2	FIXED	ALUM	15'-0" (SEE DETAIL FOR DIVISIONS)	8'-0"	0'-0"		INTERIOR STOREFRONT		
SF-3	FIXED	ALUM	20'-0" (SEE DETAIL FOR DIVISIONS)	8'-0"	0'-0"		INTERIOR STOREFRONT		
SF-4	FIXED	ALUM	20'-0" (SEE DETAIL FOR DIVISIONS)	8'-0"	0'-0"		INTERIOR STOREFRONT		
SF-5	FIXED	ALUM	15'-0" (SEE DETAIL FOR DIVISIONS)	8'-0"	0'-0"		INTERIOR STOREFRONT		

DOOR SCHEDULE									
DOOR #	LOCATION	MATERIAL	TYPE	DOOR SIZE	THICK	FRAME	FIRE	HARDW SET	REMARKS
101A	MAIN ENTRANCE	ALUM/GLASS TEMP.	STOREFRONT	(213'-0"x8'-0"	1-3/4"	ALUM	--	3	
101B	MEY'S BATHROOM	SOLID WOOD CORE	FLUSH PANEL	3'-0"x8'-0"	1-3/4"	H.M.	--	1	
101C	HALLWAY	ALUM/GLASS TEMP.	STOREFRONT	3'-0"x8'-0"	1-3/4"	ALUM	--	3	
101D	HALLWAY	ALUM/GLASS TEMP.	STOREFRONT	3'-0"x8'-0"	1-3/4"	ALUM	--	3	
101E	JAN. CL.	SOLID WOOD CORE	FLUSH PANEL	2'-8"x8'-0"	1-3/4"	H.M.	--	5	
101F	L.T. ROOM	SOLID WOOD CORE	FLUSH PANEL	3'-0"x8'-0"	1-3/4"	H.M.	--	2	
101G	MANAGER RM	SOLID WOOD CORE	FLUSH PANEL	3'-0"x8'-0"	1-3/4"	H.M.	--	2	
101H	ELECTICAL RM.	SOLID WOOD CORE	FLUSH PANEL	3'-0"x8'-0"	1-3/4"	H.M.	--	5	
101I	WOMEN'S BATHROOM	SOLID WOOD CORE	FLUSH PANEL	3'-0"x8'-0"	1-3/4"	H.M.	--	1	
101J	TENNIS COURTS	ALUM/GLASS TEMP.	STOREFRONT	(213'-0"x8'-0"	1-3/4"	ALUM	--	3	
101K	TENNIS COURTS	H.M.	FLUSH PANEL	(213'-0"x8'-0"	1-3/4"	H.M.	--	4	
101L	TENNIS COURTS	H.M.	FLUSH PANEL	3'-0"x8'-0"	1-3/4"	H.M.	--	4	
101M	TENNIS COURTS	H.M.	FLUSH PANEL	3'-0"x8'-0"	1-3/4"	H.M.	--	4	
101N	TENNIS COURTS	H.M.	FLUSH PANEL	(213'-0"x8'-0"	1-3/4"	H.M.	--	4	

NOTES:

- CONTRACTOR TO PROVIDE PRODUCT SUBMITTALS FOR ALL DOORS AND HARDWARE. ALL MANUFACTURE'S SPECIFICATIONS AND INSTALLATION METHODS SHALL BE REVIEWED BY THE CONTRACTOR AND IF ANY DISCREPANCIES OR CONFLICTS BETWEEN MANUFACTURE SPECIFICATIONS AND CONSTRUCTION DOCUMENTS ARE FOUND THE ARCHITECT WILL BE NOTIFIED IMMEDIATELY. ANY DISCREPANCIES OR CONFLICTS SHALL BE CLARIFIED PRIOR TO WORK CONTINUING WORK IN AFFECTED AREA.
- ALL DOORS WITH GLASS TO BE TEMPERED
- SAFETY GLAZING IN DOORS SHALL COMPLY WITH FBC SECTION 2406.4.1 GLAZING IN DOORS
- PER FBC SECTION 2406.2 TEMPERED OR SAFETY GLASS AT INTERIOR DOORS AND OTHER HAZARDOUS INTERIOR LOCATIONS (E.G. SHOWER ENCLOSURES AND MIRRORING DOORS). GLAZING MUST COMPLY WITH 16 CFR 1201, CATEGORY II SAFETY GLASS SEE TABLE 2406.2(1).



1 TYPICAL EXTERIOR PARTITION AT TENNIS COURT

1A TYPICAL EXTERIOR PARTITION AT TENNIS COURT/CLUBHOUSE

2 TYPICAL EXTERIOR PARTITION AT CLUBHOUSE

3 TYPICAL INTERIOR PARTITION

3A TYPICAL INTERIOR PARTITION

3B TYPICAL INTERIOR PARTITION

3C TYPICAL INTERIOR PARTITION

3D TYPICAL INTERIOR PARTITION

3E TYPICAL INTERIOR PARTITION

3F TYPICAL INTERIOR PARTITION

3G TYPICAL INTERIOR PARTITION

3H TYPICAL INTERIOR PARTITION

3I TYPICAL INTERIOR PARTITION

3J TYPICAL INTERIOR PARTITION

3K TYPICAL INTERIOR PARTITION

3L TYPICAL INTERIOR PARTITION

3M TYPICAL INTERIOR PARTITION

3N TYPICAL INTERIOR PARTITION

3O TYPICAL INTERIOR PARTITION

3P TYPICAL INTERIOR PARTITION

3Q TYPICAL INTERIOR PARTITION

3R TYPICAL INTERIOR PARTITION

3S TYPICAL INTERIOR PARTITION

3T TYPICAL INTERIOR PARTITION

3U TYPICAL INTERIOR PARTITION

3V TYPICAL INTERIOR PARTITION

3W TYPICAL INTERIOR PARTITION

3X TYPICAL INTERIOR PARTITION

3Y TYPICAL INTERIOR PARTITION

3Z TYPICAL INTERIOR PARTITION

3AA TYPICAL INTERIOR PARTITION

3AB TYPICAL INTERIOR PARTITION

3AC TYPICAL INTERIOR PARTITION

3AD TYPICAL INTERIOR PARTITION

3AE TYPICAL INTERIOR PARTITION

3AF TYPICAL INTERIOR PARTITION

3AG TYPICAL INTERIOR PARTITION

3AH TYPICAL INTERIOR PARTITION

3AI TYPICAL INTERIOR PARTITION

3AJ TYPICAL INTERIOR PARTITION

3AK TYPICAL INTERIOR PARTITION

3AL TYPICAL INTERIOR PARTITION

3AM TYPICAL INTERIOR PARTITION

3AN TYPICAL INTERIOR PARTITION

3AO TYPICAL INTERIOR PARTITION

3AP TYPICAL INTERIOR PARTITION

3AQ TYPICAL INTERIOR PARTITION

3AR TYPICAL INTERIOR PARTITION

3AS TYPICAL INTERIOR PARTITION

3AT TYPICAL INTERIOR PARTITION

3AU TYPICAL INTERIOR PARTITION

3AV TYPICAL INTERIOR PARTITION

3AW TYPICAL INTERIOR PARTITION

3AX TYPICAL INTERIOR PARTITION

3AY TYPICAL INTERIOR PARTITION

3AZ TYPICAL INTERIOR PARTITION

3BA TYPICAL INTERIOR PARTITION

3BB TYPICAL INTERIOR PARTITION

3BC TYPICAL INTERIOR PARTITION

3BD TYPICAL INTERIOR PARTITION

3BE TYPICAL INTERIOR PARTITION

3BF TYPICAL INTERIOR PARTITION

3BG TYPICAL INTERIOR PARTITION

3BH TYPICAL INTERIOR PARTITION

3BI TYPICAL INTERIOR PARTITION

3BJ TYPICAL INTERIOR PARTITION

3BK TYPICAL INTERIOR PARTITION

3BL TYPICAL INTERIOR PARTITION

3BM TYPICAL INTERIOR PARTITION

3BN TYPICAL INTERIOR PARTITION

3BO TYPICAL INTERIOR PARTITION

3BP TYPICAL INTERIOR PARTITION

3BQ TYPICAL INTERIOR PARTITION

3BR TYPICAL INTERIOR PARTITION

3BS TYPICAL INTERIOR PARTITION

3BT TYPICAL INTERIOR PARTITION

3BU TYPICAL INTERIOR PARTITION

3BV TYPICAL INTERIOR PARTITION

3BW TYPICAL INTERIOR PARTITION

3BX TYPICAL INTERIOR PARTITION

3BY TYPICAL INTERIOR PARTITION

3BZ TYPICAL INTERIOR PARTITION

3CA TYPICAL INTERIOR PARTITION

3CB TYPICAL INTERIOR PARTITION

3CC TYPICAL INTERIOR PARTITION

3CD TYPICAL INTERIOR PARTITION

3CE TYPICAL INTERIOR PARTITION

3CF TYPICAL INTERIOR PARTITION

3CG TYPICAL INTERIOR PARTITION

3CH TYPICAL INTERIOR PARTITION

3CI TYPICAL INTERIOR PARTITION

3CJ TYPICAL INTERIOR PARTITION

3CK TYPICAL INTERIOR PARTITION

3CL TYPICAL INTERIOR PARTITION

3CM TYPICAL INTERIOR PARTITION

3CN TYPICAL INTERIOR PARTITION

3CO TYPICAL INTERIOR PARTITION

3CP TYPICAL INTERIOR PARTITION

3CQ TYPICAL INTERIOR PARTITION

3CR TYPICAL INTERIOR PARTITION

3CS TYPICAL INTERIOR PARTITION

3CT TYPICAL INTERIOR PARTITION

3CU TYPICAL INTERIOR PARTITION

3CV TYPICAL INTERIOR PARTITION

3CW TYPICAL INTERIOR PARTITION

3CX TYPICAL INTERIOR PARTITION

3CY TYPICAL INTERIOR PARTITION

3CZ TYPICAL INTERIOR PARTITION

3DA TYPICAL INTERIOR PARTITION

3DB TYPICAL INTERIOR PARTITION

3DC TYPICAL INTERIOR PARTITION

3DD TYPICAL INTERIOR PARTITION

3DE TYPICAL INTERIOR PARTITION

3DF TYPICAL INTERIOR PARTITION

3DG TYPICAL INTERIOR PARTITION

3DH TYPICAL INTERIOR PARTITION

3DI TYPICAL INTERIOR PARTITION

3DJ TYPICAL INTERIOR PARTITION

3DK TYPICAL INTERIOR PARTITION

3DL TYPICAL INTERIOR PARTITION

3DM TYPICAL INTERIOR PARTITION

3DN TYPICAL INTERIOR PARTITION

3DO TYPICAL INTERIOR PARTITION

3DP TYPICAL INTERIOR PARTITION

3DQ TYPICAL INTERIOR PARTITION

3DR TYPICAL INTERIOR PARTITION

3DS TYPICAL INTERIOR PARTITION

3DT TYPICAL INTERIOR PARTITION

3DU TYPICAL INTERIOR PARTITION

3DV TYPICAL INTERIOR PARTITION

3DW TYPICAL INTERIOR PARTITION

3DX TYPICAL INTERIOR PARTITION

3DY TYPICAL INTERIOR PARTITION

3DZ TYPICAL INTERIOR PARTITION

3EA TYPICAL INTERIOR PARTITION

3EB TYPICAL INTERIOR PARTITION

3EC TYPICAL INTERIOR PARTITION

3ED TYPICAL INTERIOR PARTITION

3EE TYPICAL INTERIOR PARTITION

3EF TYPICAL INTERIOR PARTITION

3EG TYPICAL INTERIOR PARTITION

3EH TYPICAL INTERIOR PARTITION

3EI TYPICAL INTERIOR PARTITION

3EJ TYPICAL INTERIOR PARTITION

3EK TYPICAL INTERIOR PARTITION

3EL TYPICAL INTERIOR PARTITION

3EM TYPICAL INTERIOR PARTITION

3EN TYPICAL INTERIOR PARTITION

3EO TYPICAL INTERIOR PARTITION

3EP TYPICAL INTERIOR PARTITION

3EQ TYPICAL INTERIOR PARTITION

3ER TYPICAL INTERIOR PARTITION

3ES TYPICAL INTERIOR PARTITION

3ET TYPICAL INTERIOR PARTITION

3EU TYPICAL INTERIOR PARTITION

3EV TYPICAL INTERIOR PARTITION

3EW TYPICAL INTERIOR PARTITION

3EX TYPICAL INTERIOR PARTITION

3EY TYPICAL INTERIOR PARTITION

3EZ TYPICAL INTERIOR PARTITION

3FA TYPICAL INTERIOR PARTITION

3FB TYPICAL INTERIOR PARTITION

3FC TYPICAL INTERIOR PARTITION

3FD TYPICAL INTERIOR PARTITION

3FE TYPICAL INTERIOR PARTITION

3FF TYPICAL INTERIOR PARTITION

3FG TYPICAL INTERIOR PARTITION

3FH TYPICAL INTERIOR PARTITION

3FI TYPICAL INTERIOR PARTITION

3FJ TYPICAL INTERIOR PARTITION

3FK TYPICAL INTERIOR PARTITION

3FL TYPICAL INTERIOR PARTITION

3FM TYPICAL INTERIOR PARTITION

3FN TYPICAL INTERIOR PARTITION

3FO TYPICAL INTERIOR PARTITION

3FP TYPICAL INTERIOR PARTITION

3FQ TYPICAL INTERIOR PARTITION

3FR TYPICAL INTERIOR PARTITION

3FS TYPICAL INTERIOR PARTITION